

SUDS ZONES and AUXILIARY STACKS

Ontario Building Code

7.4.2.1.

(4) Where a change in direction of more than 45° occurs in a *soil* or *waste pipe* that serves more than one clothes washer, and in which pressure zones are created by detergent suds, no other *soil* or *waste pipe* shall be connected to it within a length less than,

- (a) 40 times the *nominal pipe size* of the *soil* or *waste pipe* or 2.44 m maximum vertical, whichever is less, before changing the change in direction, and
- (b) a 10 times the *nominal pipe size* of the *nominally horizontal soil* or *waste pipe* after changing the change in direction.

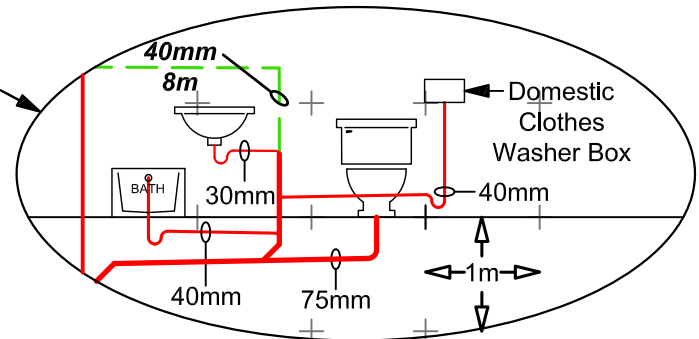
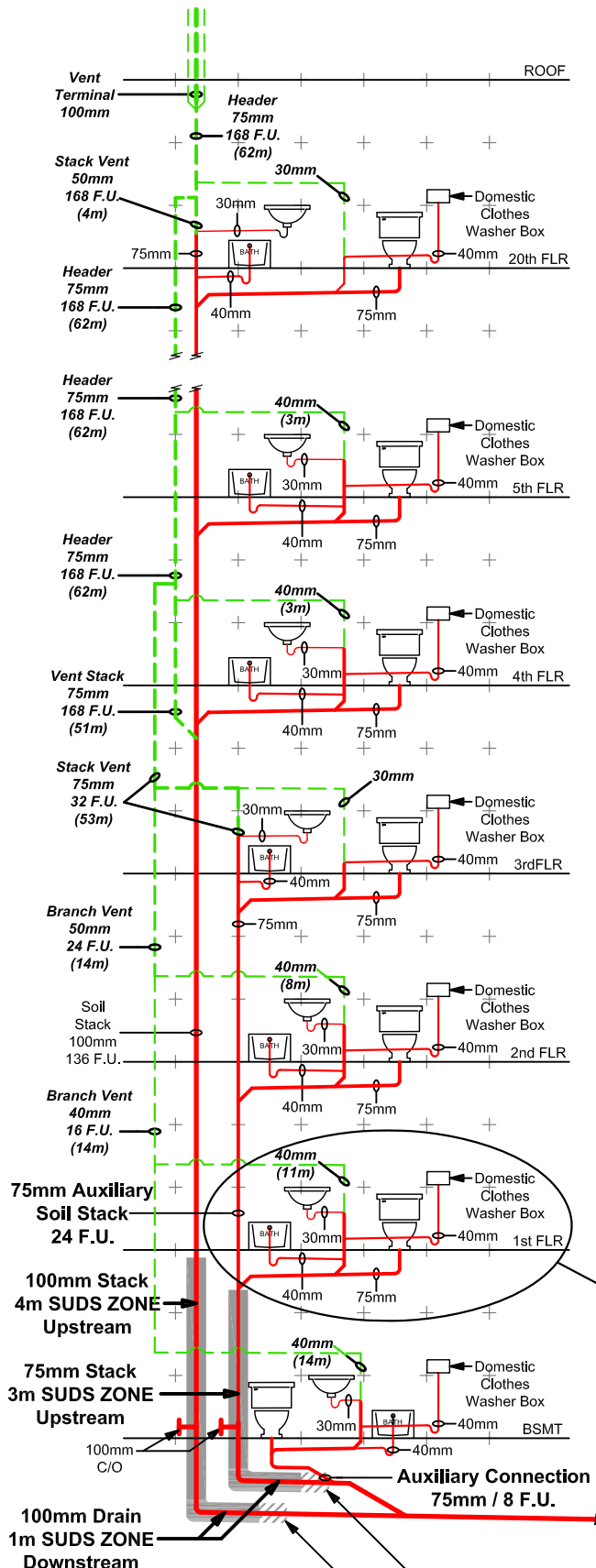
(5) Where a vent pipe is connected into the a suds pressure zone referred to in Sentence (4), no other vent pipe shall be connected to that vent pipe within the height of the suds pressure zone.

(See Note A-7.4.2.1.(2) and (5).)

Auxiliary Stacks and Auxiliary Connections,

Is a new stack with or without an additional connection discharging downstream of a soil or waste stack serving fixtures in a high-rise building. The connection of an Auxiliary Stack or an Auxiliary Connection will prevent;

1. Negative air pressure causing trap seal loss,
2. Back Pressure causing the trap seal to be pushed up into the fixture, or
3. Sudsing causing soap suds to push through the trap seal resulting in property damage.



Ontario Building Code (7.4.2.1.(2) a.k.a. the AREA OF TURBULENCE),

7.4.2.1.(2) The connection of a *soil* or *waste pipe* to a *nominally horizontal soil* or *waste pipe* or to a *nominally horizontal offset* in a *soil* or *waste stack* shall be respectively at least 1 500 mm measured horizontally from the bottom of a *soil* or *waste stack* or from the bottom of the upper vertical section of the *soil* or *waste stack* that,

- (a) receives a discharge of 30 or more *fixture units*, or
- (b) receives a discharge from *fixtures* located on 2 or more *storeys*.